

## Space Requirements:

### GOAL OF DISTRICT ELEMENTARY SCHOOLS EDUCATIONAL SPECIFICATION

A goal of HMS is to provide the same level of education to all elementary students. To accomplish this goal, the district has to have adequate facilities at each elementary school to support the educational program and student enrollment. Currently the student enrollment and limited existing facilities make it difficult for the district to accomplish this goal. The district undertook the development of this elementary educational specification to develop basic facility requirements that all elementary schools need to support the district's educational program. This educational specification will assist the district in identifying its facility needs related to support of the elementary educational program, and how to address those needs.

Recently HMS has experienced a substantial growth in elementary student enrollment which has resulted in some elementary schools adapting how they deliver the educational program. Not all elementary students have access to the same level of educational programs throughout the district due to limited facilities. HMS realizes that it cannot address all of the elementary school facility needs immediately, but the district is taking that first step by constructing a new elementary school and replacing Broadmoor ES. This will address the current and anticipated lack of educational space to support the educational program. HMS will continue to align all district elementary school facilities with this educational specification as funds become available.

### CAPACITY OF DISTRICT ELEMENTARY SCHOOLS

In Section 2 of this educational specification, the district's elementary school educational program has been documented. During the development of this educational specification, HMS also analyzed student projected enrollment, capacity, and instructional spaces at all existing elementary schools. To support the district's elementary educational program, meet student needs, and meet operational requirements, HMS has established an ideal capacity of 400 to 450 students for its new elementary schools housing kindergarten through fifth grade. HMS realizes that each school site will need to be analyzed and sized appropriately according to overall district student enrollment, site restrictions, and educational program needs. The district has several existing sites that are smaller and in the heart of existing neighborhoods. Some of these sites might not be able to accommodate an elementary school with a capacity of 400 to 450.

## Space Requirements:

HMS realized the need for a new elementary school to accommodate the growth in elementary students. The new Hobbs elementary school will have a design capacity of 450 kindergarten through fifth grade students with a section that will house 75 morning Pre-K students and 75 afternoon Pre-K students. Due to site constraints, the facility will be two story. This new elementary school will allow the district to re-align its attendance zones and redistribute all elementary students. This will reduce the existing and projected over-crowding conditions at several district elementary schools and allow all elementary schools to provide adequate space to support its educational program.

The Broadmoor Replacement Elementary School will have a design capacity of 400 kindergarten through fifth grade students. Currently Broadmoor ES houses 351 students and has had to modify its method of delivering the educational program to its students due to a lack of facilities. Site constraints dictate that the new facility will be two story.

### ELEMENTARY SCHOOL EDUCATIONAL SPECIFICATION REFERENCES

During the development of this educational specification, HMS referred to and based the quantity and size of elementary school spaces on the following references:

- PSFA's Recommended Square Foot per Student
- Public Education Department's (PED) Pupil to Teacher Ratio (PTR)
- New Mexico Adequacy Standards
- New Mexico Adequacy Planning Guide
- School District Facilities master Plan Components and Guidelines
- Common Core Standards

### OVERALL ELEMENTARY SCHOOL FOOTPRINT:

For an elementary school that is partnered with PSCOC / PSFA, the PSFA's recommended square foot per student formula is utilized to determine the overall footprint of the school. The formula is dependent upon the capacity of the individual school. As an elementary school project comes on-line, the actual overall school footprint will be calculated.

HMS utilized the PFSA recommended square foot per student formula to determine the overall footprint for both the New Hobbs Elementary School and the Broadmoor Replacement Elementary School.

## Space Requirements:

### New Hobbs Elementary School:

PSFA Recommended School Footprint: 525 student capacity with  
126 sf / student = 66,150sf

HMS New Elementary School Final Footprint: 66,293sf

Square Footage in excess of PSFA Recommendations: 143sf

### Broadmoor Replacement Elementary School:

PSFA Recommended School Footprint: 400 student capacity with  
132 sf / student = 52,800sf

Broadmoor ES Final Footprint: 53,993sf

Square Footage in excess of PSFA Recommendations: 1,193sf

HMS realizes that it is 100% responsible for any square footage over the PSFA recommended square footage per student calculation.

## INSTRUCTIONAL SPACE CAPACITY

To determine the capacity of each instructional space, HMS utilized Public Education Department's Pupil to Teacher Ratio (PTR) for elementary schools with no exceptions:

Grade / Program	Students / Teacher
1st Grade	22
2nd Grade	22
3rd Grade	22
4th Grade	24
5th Grade	24
Kindergarten	15 / 20 (Over 15 students requires an aide)
A & B Level	25
C Level	16
D Level	8
Federal	16
Pre-K	10 / 20 (Over 11 requires aide)
SLP	8

## Space Requirements:

### SIZE OF INDIVIDUAL SPACES

To determine the appropriate size of each elementary school space, HMS utilized the current Statewide Adequacy Standards as a guide. All spaces were reviewed and then designed to meet or slightly exceed these standards. For elementary school spaces the following square foot / student formulas were utilized:

#### General Use Classrooms:

**Kindergarten:** 50 net sf / student plus 2 sf / student in-classroom dedicated storage

$50 \text{ sf} * 20 \text{ students} + 40 \text{ sf of storage} = 1,040\text{sf}$  per kindergarten classroom minimum per NM adequacy standards

HMS standardized on the NM adequacy standards square footage for Kindergarten

**Grades 1 – 5:** 32 net sf / student plus 2 sf / student in-classroom dedicated storage per NM adequacy standards

$32 \text{ sf} * 22 \text{ student} + 44 \text{ sf of storage} = 748\text{sf}$  per 1 – 5 grade classroom minimum

To support the Common Core Standards and instructional delivery methods, HMS increased the adequacy standard square footage of the general use classrooms to 816sf plus 44sf of storage for 860sf classrooms

#### Specialty Classrooms:

**Special Education Classrooms:** 450 net sf minimum plus 15 sf storage – 465sf per NM adequacy standards

HMS increased the adequacy standard square footage of special educational classrooms to 485 plus 15sf of storage for 500sf classrooms, to support the elementary educational program and support future flexibility

#### “D” Level Special Education Classroom:

HMS increased the adequacy standard square footage of this specialized classroom to 1000sf plus 40sf of storage. This gives the school the flexibility to utilize this space for either Pre-k or Kindergarten if needed, to support the ‘D’ Level students and support future flexibility

## Space Requirements:

### **Art Education Programs:**

General Use Classroom plus 60 sf storage = 764sf per NM adequacy standards

HMS increased the adequacy standard square footage of this specialized classroom to 816sf plus 104sf of storage. This corresponds to a general classroom plus additional storage, to support the art program and provide future flexibility

### **Technology-Aided Instruction:**

3 net sf / student with no less than 700 net sf = 764 sf per NM adequacy standards

HMS increased the size of the adequacy standard square footage of this specialized classroom to provide two general use sized space plus storage, to support the technology-aided program and support future flexibility

### **Physical Education:**

2,400 net sf minimum plus 200 sf for one office with storage = 2,600sf per NM adequacy standards

HMS standardized on the NM adequacy standards square footage for Physical Education

### **Libraries and Media Centers:**

3 net sf / student, no less than 1,000 net sf plus office / workroom and secure storage = 1,300sf minimum per NM adequacy standards

HMS adjusted the adequacy standards square footage for Libraries and Media Centers to 4sf per student plus an office / workroom of 300sf and storage of 150sf, based on the national standard of 6sf / student for Libraries and Media Center

### **Food Service; Other Facility Areas; General Storage; and Maintenance:**

#### **Food Service:**

Dependent upon School Capacity per NM adequacy standards HMS standardized on 3,000sf for cafeteria (200 seats at 15sf per student)

HMS standardized on 300sf for serving

HMS standardized on 300sf for cafeteria storage

HMS standardized on 600sf for warming kitchens

## Space Requirements:

### Parent Work Room:

½ sf per student or 150 net sf minimum per NM adequacy standards

HMS standardized on 300sf per Parent Work Room

### Administration:

1 net sf / student plus 150sf per NM adequacy standards

HMS standardized on:

Principal Office	300sf
Reception	450sf
Workroom	175sf
Counselor	100sf
ISS Room	150sf
Conference Room	250sf
Storage / Vault	150sf

### Health:

1 net sf / student per NM adequacy standards

HMS standardized on the NM adequacy standards square footage for Health

### Teacher Workroom / Lounge:

1 net sf / student per NM adequacy standards

HMS standardized on 400sf Teacher Lounge

HMS standardized on two 200sf Teacher Workrooms (one per floor level)

### General Storage:

1 net sf / student per NM adequacy standards

HMS standardized on the NM adequacy standards square footage for General Storage

### Miscellaneous and Support Spaces:

0 net sf / student per NM adequacy standards

## Space Requirements:

HMS standardized on 100sf per IT equipment rooms

**Tare:**

HMS standardized on:

Corridors:	17%
Toilets:	3%
Mechanical, Electrical, Janitor's Closets:	2%
Walls:	8%
Total Tare:	30%

## Space Requirements:

### QUANTITY AND SIZE OF SPACES

During the educational specification process the quantity and size of spaces required to support the elementary school educational program were discussed at length. Each space was reviewed and discussed. From these discussions, the district developed a basic program of spaces to meet the needs of their elementary students and their educational program based on PED's Pupil to Teacher Ratio and PSFA's recommended square foot per student. As stated above, slight modifications to the New Mexico Adequacy Standards were made for some spaces; however, all elementary school spaces meet or slightly exceed these standards.

PROGRAM OF SPACES BASED ON EDUCATIONAL SPECIFICATIONS			
RM #	Room Description	NSF per Space	NOTES
	Pre-K w/ 40sf Storage	1,040	20 students w/ one aid
	Kindergarten w/ 40 sf Storage	1,040	20 students w/ one aid
	1st Grade w/ 44sf Storage	860	22 students
	2nd Grade w/ 44sf Storage	860	22 students
	3rd Grade w/ 44 sf Storage	860	22 students
	4th Grade w/ 48sf Storage	860	24 students
	5th Grade w/ 48sf Storage	860	24 students
<b>GENERAL USE CLRMS:</b>		<b>6,380</b>	Total Number of classrooms based on school capacity
	Sp.Ed. D Level w/ 40ssf storage	1,040	D Level Students
	Sp.Ed. Classroom w/ 20sf storage	500	Number of special ed classrooms based on need
<b>SPECIAL ED CLRMS:</b>		<b>1,540</b>	
	Art w/ 60sf storage	920	
	Music	860	Based on general use classroom design
	Bilingual Education	860	Based on general use classroom design
	Computer Lab	860	Based on general use classroom design
	Gymnasium	2,400	
	Gymnasium Office / Storage	200	
<b>SPECIAL USE CLRMS:</b>		<b>6,100</b>	
	Library	1,800	District standard of 4sf per student for library
	Office / Workroom	300	Combine office and Workroom for School Lockdown
	Storage	150	
<b>LIBRARY/MEDIA CENTER:</b>		<b>2,250</b>	
	Cafeteria: 200 seats	3,000	Based on maximum of 3 seating per lunch
	Serving: 200	300	
	Cafeteria Storage: Stage, chairs, tables	300	
	Kitchen: Warming	600	District has central kitchen, but does limited prep at schools
<b>FOOD SERVICE:</b>		<b>4,200</b>	
	Parent Work Room	300	
<b>PARENT WORK ROOM:</b>		<b>300</b>	



## Space Requirements:

Principal's office	300	Use as a small conference room
Reception	450	
Workroom	175	
Counselor	100	
ISS Room	150	Small room for In-school suspension of students
Conference Room	250	
Storage / Vault	150	
<b>ADMIN:</b>	<b>1,575</b>	
Nurse Office	125	Based on one square foot per student
Exam / Testing Room	300	
Waiting Area	100	
<b>HEALTH:</b>	<b>525</b>	
Teacher Lounge	400	
Teacher Workroom	200	Provide workroom on each floor of 2 story school
<b>TEACHER WORKROOM/LOUNGE:</b>	<b>600</b>	
Storage	175	Based on 1 square foot per student
Storage	175	
Storage	175	
<b>GENERAL STORAGE:</b>	<b>525</b>	
TLC Conference Room	250	This space is only for schools w/ Pre-K
Server Room	100	
<b>MISC AND SUPPORT:</b>	<b>350</b>	
Corridors: 17%	17%	
Toilets: 3%	3%	
Mech, Electrical, Janitors Closets:2%	2%	
Walls: 8%	8%	
<b>TARE:</b>	<b>30%</b>	

Refer to the following pages for the New Hobbs Elementary School and Broadmoor Elementary School summary of spaces:

*This page intentionally left blank.*

**SECTION**  
**5**

**Space Requirements:**

**New Hobbs Elementary School**

**PROGRAM OF SPACES FOR EDUCATIONAL SPECIFICATIONS AND PROGRAM STATEMENT**

School, School District: Hobbs New ES, Hobbs School District  
 Insert Award Language:  
 Approved Design Capacity: 525 75 DD Students included in design  
 Allowed Gross Square Footage per Appendix A of the PSFA Adequacy Planning Guide: 126

75 Typically Developing Students included in design

- Existing Space to Remain/To Be Renovated
- New Space
- Space to Be Demolished

Please refer to the notes below for a description of each column

PROGRAM OF SPACES BASED ON EDUCATIONAL SPECIFICATIONS												PROGRAM OF SPACES BASED ON PROGRAM STATEMENT						NOTES
RM #	Room Description	Allowed by Adequacy per Space	# of Spaces Provided	# of Students Served per Space	Max. # of Students Served per Area/Grade	Project Total NSF per Space	NSF per Student per Space	NSF to Adequacy per Area	NSF Above Adequacy per Area	Total NSF per Area	Total Sub Area Space	# of Spaces	NSF per Space	NSF to Adequacy	NSF Above Adequacy	TOTAL NSF	Total Sub Area NSF	
	Pre-K w/Storage	1,040	6	12	72	1,040	87	6,240	0	6,240								
	Kindergarten w/ Storage	1,040	4	20	80	1,040	52	4,160	0	4,160								
	1st Grade w/Storage	748	4	22	88	860	39	2,992	448	3,440								
	2nd Grade w/Storage	748	4	22	88	860	39	2,992	448	3,440								
	3rd Grade w/Storage	748	4	22	88	860	39	2,992	448	3,440								
	4th Grade w/Storage	816	3	24	72	860	36	2,448	132	2,580								
	5th Grade w/Storage	816	3	24	72	860	36	2,448	132	2,580								
	<b>GENERAL USE CLRMS:</b>	24,272	28	146	560	6,380		24,272	1,608	25,880	25,880							
	Sp.Ed. D Level w/ storage	465	1	8	8	1,040	130	465	575	1,040								
	Sp.Ed. Classroom w/storage	465	4	0	0	500		1,860	140	2,000								
	<b>SPECIAL ED CLRMS:</b>	2,325	5	8	8	1,540		2,325	715	3,040	3,040							
	Art	816	1			860		816	44	860								
	Art Storage	60	1			60		60	0	60								
	Music	816	1			860		816	44	860								
	Bilingual Education	816	1			860		816	44	860								
	Computer Lab	1,575	2			860		1,575	145	1,720								
	Gymnasium	2,400	1			2,400		2,400	0	2,400								
	Gymnasium Office / Storage	200	1			200		200	0	200								
	<b>SPECIAL USE CLRMS:</b>	6,683	8			6,100		6,683	277	6,960	6,960							
	Library	1,575	1			1,800		1,575	225	1,800								
	Office / Workroom	300	1			300		300	0	300								
	Storage	150	1			150		150	0	150								
	<b>LIBRARY/MEDIA CENTER:</b>	2,025	3			2,250		2,025	225	2,250	2,250							
	Cafeteria: 200 seats	3,000	1			3,000		3,000	0	3,000								
	Serving: 200	300	1			300		300	0	300								
	Cafeteria Storage: Stage, chairs, tables		1			300		0	300	300								
	Kitchen: Warming	200	1			600		200	400	600								
	<b>FOOD SERVICE:</b>	3,500	4			4,200		3,500	700	4,200	4,200							
	Parent Work Room	263	1			300		263	38	300								
	<b>PARENT WORK ROOM:</b>	263	1			300		263	38	300	300							
	Principal's office		1			300		0	300	300								
	Reception		1			450		0	450	450								
	Workroom		1			175		0	175	175								
	Counselor		1			100		0	100	100								
	ISS Room		1			150		0	150	150								
	Conference Room		1			250		0	250	250								
	Storage / Vault		1			150		0	150	150								
	<b>ADMIN:</b>	938	7			1,575		938	638	1,575	1,575							
	Nurse Office		1			125		0	0	125								



# Space Requirements:

## Broadmoor Replacement Elementary School

**PROGRAM OF SPACES FOR EDUCATIONAL SPECIFICATIONS AND PROGRAM STATEMENT**

School, School District: Broadmoor ES, Hobbs School District  
 Insert Award Language:  
 Approved Design Capacity: 400  
 Allowed Gross Square Footage per Appendix A of the PSFA Adequacy Planning Guide: 132.0

- Existing Space to Remain/To Be Renovated
- New Space
- Space to Be Demolished

Please refer to the notes below for a description of each column

PROGRAM OF SPACES BASED ON EDUCATIONAL SPECIFICATIONS												PROGRAM OF SPACES BASED ON PROGRAM STATEMENT						NOTES
RM #	Room Description	Allowed by Adequacy per Space	# of Spaces Provided	# of Students Served per Space	Max. # of Students Served per Area/Grade	Project Total NSF per Space	NSF per Student per Space	NSF to Adequacy per Area	NSF Above Adequacy per Area	Total NSF per Area	Total Sub Area Space	# of Spaces	NSF per Space	NSF to Adequacy	NSF Above Adequacy	TOTAL NSF	Total Sub Area NSF	
	Kindergarten w/ Storage	1,040	4	20	80	1,040	52	4,160	0	4,160								
	1st Grade w/Storage	748	4	22	88	860	39	2,992	448	3,440								
	2nd Grade w/Storage	748	3	22	66	860	39	2,244	336	2,580								
	3rd Grade w/Storage	748	3	22	66	860	39	2,244	336	2,580								
	4th Grade w/Storage	816	3	24	72	860	36	2,448	132	2,580								
	5th Grade w/Storage	816	3	24	72	860	36	2,448	132	2,580								
<b>GENERAL USE CLRMS:</b>		16,536	20	134	444	5,340		16,536	1,384	17,920	17,920							
	Sp.Ed. D Level w/ storage	465	1	8	20	1,040	130	465	575	1,040								
	Sp.Ed. Classroom w/storage (Speech, OT/PT, Pullout, Testing)	465	4	0	80	500		1,860	140	2,000								
<b>SPECIAL ED CLRMS:</b>		2,325	5	8	100	1,540		2,325	715	3,040	3,040							
	Art	816	1	0	0	860		816	44	860								
	Art Storage	60	1	0	0	60		60	0	60								
	Music	816	1	0	0	860		816	44	860								Locate Music clrm at end of gym to be used as a stage
	Bilingual Education	816	1	0	0	860		816	44	860								
	Computer Lab: connect one to Library	1,200	2	0	0	860		1,200	520	1,720								
	Gymnasium	2,400	1	0	0	2,400		2,400	0	2,400								Gym, music clrm and cafeteria will be connected
	Gymnasium Office / Storage	200	1	0	0	200		200	0	200								
<b>SPECIAL USE CLRMS:</b>		6,308	8	0	0	6,100		6,308	652	6,960	6,960							
	Library	1,200	1	0	0	1,600		1,200	400	1,600								District wants to use 4sf per student for library
	Office / Workroom	300	1	0	0	300		300	0	300								
	Storage	150	1	0	0	150		150	0	150								
<b>LIBRARY/MEDIA CENTER:</b>		1,650	3	0	0	2,050		1,650	400	2,050	2,050							
	Cafeteria: 200 seats	3,000	1	0	0	3,000		3,000	0	3,000								Cafeteria, gym and music classroom will be connected
	Serving: 200	300	1	0	0	300		300	0	300								
	Storage: stage, tables, chairs		1			300		0	300	300								
	Kitchen: Warming	200	1	0	0	600		200	400	600								
<b>FOOD SERVICE:</b>		3,500	4	0	0	4,200		3,500	700	4,200	4,200							
	Parent Work Room	200	1	0	0	300		200	100	300								
<b>PARENT WORK ROOM:</b>		200	1	0	0	300		200	100	300	300							



## Space Requirements:

Spaces to be Demolished		
Rm #	Room Description	Total GSF/Space
001R	3rd Grade	795
002R	3rd Grade	795
003R	2nd Grade	795
004R	3rd Grade	796
005R	2nd Grade	794
006R	2nd Grade	794
007R	Kindergarten	735
008R	Kindergarten	796
010R	Kindergarten	795
011R	4th Grade	786
012R	4th Grade	795
013R	1st Grade	940
014R	1st Grade	977
015R	1st Grade	982
009A	Office	215
009C	SPED	242
009B	Bilingual	273
009D	Music	246
	Computer Lab	914
	Multi-Purpose	3,213
1	Library	1,548
2	Workroom	214
	Kitchen Suite	482
1	Admin	226
2	Principal	219
3	IEP	140
4	Office	99
5	Storage	226
	Nurse	184
	Lounge	191
1	Storage	116
2	Storage	250
3	Storage	117
4	Storage	42
1	Art Storage	213
2	Server	107
3	Storage	130
4	Storage	96
5	Storage	40
6	Storage	40
7	Storage	75
8	Storage	31
1	Mech	250
2	Mech	531
3	JC	40
1	Toilet	62
2	Toilet	56
3	Toilet	23
4	Toilet	23
		22,449
	Remaining Tare	8,892
	<b>TOTAL GSF</b>	<b>31,341</b>

## Space Requirements:

Portable Spaces to be Demolished		
Rm #	Room Description	Total GSF/Space
P1	4th Grade	600
P2	5th Grade	697
P3	5th Grade	697
TOTAL GSF		1,994



## Space Requirements:

### UTILIZATION OF SPACE:

HMS prides itself on efficient use of its elementary schools. The district understands that it is the community and State that supports its educational facilities. To assure future community and State support, the district will continue to demonstrate that it uses district funds efficiently and prudently.

HMS has developed an educational specification for its elementary schools that provides facilities to support the elementary educational program efficiently, effectively with little to no excess square footage. As stated above, HMS based the quantity and size of its elementary classrooms on PED's PTR and NM Adequacy Standards with little modification. HMS is dedicated to providing elementary schools which support its educational program in approximately the overall PSFA recommended square footage per student.

The Utilization Worksheets for the New Hobbs Elementary School and Broadmoor Replacement Elementary School on the following pages indicate that all general use classrooms at both schools will be utilized 100%. The district has provided special education, art, music, Bilingual, computer lab, and physical education spaces at both schools necessary to support the facility requirements of the educational program.

#### **New Hobbs Elementary School:**

At the New Hobbs Elementary School, the student capacity of 525 is 86% of its maximum functional capacity. This is a preliminary calculation and could change once the school is open and true distribution of students is included in the formula. Currently the formula is based upon approximately 75 students in each grade, but this is rarely the case. Some grades will be larger and some smaller, which will affect the overall capacity of the school.

As indicated above, the general use classrooms at the New Hobbs Elementary School will be utilized at 100%. The overall utilization of the instructional spaces, which includes special education, art, music, Bilingual, computer lab, and physical education spaces, should be approximately 72%. This indicates that approximately 72% of the instructional spaces are general use classrooms and 28% are special use classrooms; or for every 3 general use instructional spaces there is approximately one special use instructional space. This is an efficient ratio for elementary schools.

## Space Requirements:

### **Broadmoor Elementary School:**

For the 2012-13 school year at Broadmoor Elementary School, the student enrollment was 351 and the maximum functional capacity was 356. This is 98.5% of its maximum functional capacity. This is an extremely high percentage and reflects the overcrowding at the existing facilities. At the Broadmoor Replacement Elementary School, the student capacity of 400 is 88% of its maximum functional capacity. This is a preliminary calculation and could change once the school is open and true distribution of students is included in the formula. Currently the formula is based upon approximately 67 students in each grade, but this is rarely the case. Some grades will be larger and some smaller, which will affect the overall capacity of the school.

As indicated above, the general use classrooms at the Broadmoor Replacement Elementary School will be utilized at 100%. The overall utilization of the instructional spaces, which includes special education, art, music, Bilingual, computer lab, and physical education spaces, should be approximately 65%. This identifies that approximately 65% of the instructional spaces are general use classrooms and 35% are special use classrooms; or for every 2 general use instructional spaces there is approximately one special use instructional space. This is a fairly efficient ratio for elementary schools. The utilization of the existing Broadmoor ES is 89% which reflects that there is only one computer lab and a physical education space. There is no special education, art, music or bilingual classrooms available at the existing facilities to support the educational program.

# Space Requirements:

## New Hobbs Elementary School 2014-15

District:	Hobbs
School:	New Hobbs ES
Date:	2014-15

GRADE LEVEL	TOTAL CURRENT STUDENT 40th DAY COUNT	NUMBER OF DD / SPECIAL NEEDS STUDENTS PER GRADE	CURRENT NUMBER OF TEACHERS	NUMBER OF CLASSROOMS
Pre-K Student		77	6	6
Kindergarten	79		4	4
1st Grade	75		4	4
2nd Grade	75		4	4
3rd Grade	75		4	4
4th Grade	72		3	3
5th Grade	72		3	3
<b>TOTALS</b>	<b>448</b>	<b>77</b>	<b>28</b>	<b>28</b>

SCHOOL HOURS	
School Start Time	7:45 AM
School End Time	2:40 AM
<b>Total Hours in School Day</b>	<b>6.5</b>
<b>Number of Lunch Turns Per Day</b>	<b>6</b>

LEGEND	
	General Instruction
	Special Education
	Special Programs
	Non-Instructional

TEACHERS NAME	CLASSROOM USE/ GRADE LEVEL	ROOM NUMBER	CIRM SQUARE FOOTAGE	CURRENT STUDENT 40TH DAY COUNT	Maximum Functional Capacity	Max. Number of Students per Adequacy Standards Sq. Ft.	PED Max. PTR per Classroom	% Classroom Occupancy	DOES CLASSROOM MEET ADEQUACY	DAYS AND HOURS SPACE IS USED					UTILIZATION		
										MONDAY HOURS USED PER DAY	TUESDAY HOURS USED PER DAY	WEDNESDAY HOURS USED PER DAY	THURSDAY HOURS USED PER DAY	FRIDAY HOURS USED PER DAY	TOTAL HOURS CLASSROOM IS USED DURING SCHOOL WEEK	TOTAL HOURS CLASSROOM IS AVAILABLE DURING SCHOOL WEEK	UTILIZATION RATE PERCENT (%)
	Pre-K w/Storage		1,040	13	20	20	20	65%	Y	6.5	6.5	6.5	6.5	6.5	32.5	32.5	100%
	Pre-K w/Storage		1,040	13	20	20	20	65%	Y	6.5	6.5	6.5	6.5	6.5	32.5	32.5	100%
	Pre-K w/Storage		1,040	13	20	20	20	65%	Y	6.5	6.5	6.5	6.5	6.5	32.5	32.5	100%
	Pre-K w/Storage		1,040	13	20	20	20	65%	Y	6.5	6.5	6.5	6.5	6.5	32.5	32.5	100%
	Pre-K w/Storage		1,040	13	20	20	20	65%	Y	6.5	6.5	6.5	6.5	6.5	32.5	32.5	100%
	Pre-K w/Storage		1,040	13	20	20	20	65%	Y	6.5	6.5	6.5	6.5	6.5	32.5	32.5	100%
	Pre-K w/Storage		1,040	13	20	20	20	65%	Y	6.5	6.5	6.5	6.5	6.5	32.5	32.5	100%
	Kindergarten w/ Storage		1,040	20	20	20	20	100%	Y	6.5	6.5	6.5	6.5	6.5	32.5	32.5	100%
	Kindergarten w/ Storage		1,040	20	20	20	20	100%	Y	6.5	6.5	6.5	6.5	6.5	32.5	32.5	100%
	Kindergarten w/ Storage		1,040	19	20	20	20	95%	Y	6.5	6.5	6.5	6.5	6.5	32.5	32.5	100%
	Kindergarten w/ Storage		1,040	19	20	20	20	95%	Y	6.5	6.5	6.5	6.5	6.5	32.5	32.5	100%
	1st Grade w/Storage		860	19	22	25	22	86%	Y	6.5	6.5	6.5	6.5	6.5	32.5	32.5	100%
	1st Grade w/Storage		860	19	22	25	22	86%	Y	6.5	6.5	6.5	6.5	6.5	32.5	32.5	100%
	1st Grade w/Storage		860	19	22	25	22	86%	Y	6.5	6.5	6.5	6.5	6.5	32.5	32.5	100%
	1st Grade w/Storage		860	18	22	25	22	82%	Y	6.5	6.5	6.5	6.5	6.5	32.5	32.5	100%
	2nd Grade w/Storage		860	19	22	25	22	86%	Y	6.5	6.5	6.5	6.5	6.5	32.5	32.5	100%
	2nd Grade w/Storage		860	19	22	25	22	86%	Y	6.5	6.5	6.5	6.5	6.5	32.5	32.5	100%
	2nd Grade w/Storage		860	19	22	25	22	86%	Y	6.5	6.5	6.5	6.5	6.5	32.5	32.5	100%
	2nd Grade w/Storage		860	18	22	25	22	82%	Y	6.5	6.5	6.5	6.5	6.5	32.5	32.5	100%
	3rd Grade w/Storage		860	19	22	25	22	86%	Y	6.5	6.5	6.5	6.5	6.5	32.5	32.5	100%
	3rd Grade w/Storage		860	19	22	25	22	86%	Y	6.5	6.5	6.5	6.5	6.5	32.5	32.5	100%
	3rd Grade w/Storage		860	19	22	25	22	86%	Y	6.5	6.5	6.5	6.5	6.5	32.5	32.5	100%
	3rd Grade w/Storage		860	18	22	25	22	82%	Y	6.5	6.5	6.5	6.5	6.5	32.5	32.5	100%
	4th Grade w/Storage		860	24	24	25	24	100%	Y	6.5	6.5	6.5	6.5	6.5	32.5	32.5	100%
	4th Grade w/Storage		860	24	24	25	24	100%	Y	6.5	6.5	6.5	6.5	6.5	32.5	32.5	100%
	4th Grade w/Storage		860	24	24	25	24	100%	Y	6.5	6.5	6.5	6.5	6.5	32.5	32.5	100%
	5th Grade w/Storage		860	24	24	25	24	100%	Y	6.5	6.5	6.5	6.5	6.5	32.5	32.5	100%
	5th Grade w/Storage		860	24	24	25	24	100%	Y	6.5	6.5	6.5	6.5	6.5	32.5	32.5	100%
	5th Grade w/Storage		860	24	24	25	24	100%	Y	6.5	6.5	6.5	6.5	6.5	32.5	32.5	100%
	Sp.Ed. D Level w/ storage		1,040		0	20	8	0%	Y	0.0	0.0	0.0	0.0	0.0	0.0	32.5	0%
	Sp.Ed. Classroom w/storage		500		0	15	16	0%	Y	0.0	0.0	0.0	0.0	0.0	0.0	32.5	0%
	Sp.Ed. Classroom w/storage		500		0	15	16	0%	Y	0.0	0.0	0.0	0.0	0.0	0.0	32.5	0%
	Sp.Ed. Classroom w/storage		500		0	15	16	0%	Y	0.0	0.0	0.0	0.0	0.0	0.0	32.5	0%
	Sp.Ed. Classroom w/storage		500		0	15	16	0%	Y	0.0	0.0	0.0	0.0	0.0	0.0	32.5	0%
	Art		860		0	27	22	0%	Y	0.0	0.0	0.0	0.0	0.0	0.0	32.5	0%
	Music		860		0	27	22	0%	Y	0.0	0.0	0.0	0.0	0.0	0.0	32.5	0%
	Bilingual Education		860		0	27	22	0%	Y	0.0	0.0	0.0	0.0	0.0	0.0	32.5	0%
	Computer Lab		860		0	27	22	0%	Y	0.0	0.0	0.0	0.0	0.0	0.0	32.5	0%
	Computer Lab		860		0	27	22	0%	Y	0.0	0.0	0.0	0.0	0.0	0.0	32.5	0%
	Gymnasium		2,400		0	75	44	0%	Y	0.0	0.0	0.0	0.0	0.0	0.0	32.5	0%
<b>Totals</b>			<b>35,620</b>	<b>525</b>	<b>608</b>	<b>943</b>	<b>834</b>	<b>62%</b>							<b>910</b>	<b>1267.5</b>	<b>72%</b>

**NOTES:**

- Count general classrooms as being used while students are attending recess, lunch, library time, and PE activities.
- 1-Max. Number of Students per Adequacy Standards Sq. Ft.: The maximum number of students allowed per the Statewide Adequacy Standards square feet.
- 2-PED Max. PTR per Classroom: PED's maximum pupil/teacher ratio per classroom
- 3-Utilization Rate Calculation: Total number of hours classroom is actually used per week / (divided by) the maximum possible classroom hours per week = (equals) total classroom utilization.

2014-15 40 day Student Enrollment:	525
------------------------------------	-----

FACILITY CAPACITY (including Portables)	
Maximum Facility Capacity:	834
Functional Facility Capacity:	608
Instructional Space Capacity w/ Portables @ 75%:	583
Instructional Space Capacity w/o Portables @ 75%:	583
Instructional Space Capacity w/ Portables @ 67%:	521
Instructional Space Capacity w/o Portables @ 67%:	521

Number of and % Of General Use Classrooms	28	76%
Number of and % Of Special Education Classrooms	3	8%
Number of and % Of Special Use Classrooms	6	16%
Number of and % Of Portable Classrooms	0	0%
<b>Total</b>	<b>37</b>	<b>100%</b>

Based On PSFA Square Footage/Student		
525 Students @ 126 sqft/student	66,150	sqft
Existing Permanent + Portable Facilities =	0	sqft
Percentage of Difference =	0%	

*This page intentionally left blank.*

# Space Requirements:

## Broadmoor Elementary School 2012-13

District:	Hobbs
School:	Broadmoor ES
Date:	2012-13

GRADE LEVEL	TOTAL CURRENT STUDENT 40th DAY COUNT	NUMBER OF DD / SPECIAL NEEDS STUDENTS PER GRADE	CURRENT NUMBER OF TEACHERS	NUMBER OF CLASSROOMS
Pre-K Student				
Kindergarten	55		4	4
1st Grade	58		4	4
2nd Grade	66		3	3
3rd Grade	61		3	3
4th Grade	61		3	3
5th Grade	50		3	3
<b>TOTALS</b>	<b>351</b>	<b>0</b>	<b>20</b>	<b>20</b>

SCHOOL HOURS	
School Start Time	7:45 AM
School End Time	2:40 AM
<b>Total Hours in School Day</b>	<b>6.5</b>
<b>Number of Lunch Turns Per Day</b>	<b>6</b>

LEGEND	
	General Instruction
	Special Education
	Special Programs
	Non-Instructional

ALL CLASSROOMS (General, Art, PE, Computer Lab SPED, Title1, PT/OT, Etc.)											DAYS AND HOURS SPACE IS USED					UTILIZATION		
TEACHERS NAME	CLASSROOM USE/ GRADE LEVEL	ROOM NUMBER	CLRM SQUARE FOOTAGE	CURRENT STUDENT 40TH DAY COUNT	Maximum Functional Capacity	Max. Number of Students per Adequacy Standards Sq. Ft.	PED Max. PTR per Classroom	% Classroom Occupancy	DOES CLASSROOM MEET ADEQUACY	MONDAY HOURS USED PER DAY	TUESDAY HOURS USED PER DAY	WEDNESDAY HOURS USED PER DAY	THURSDAY HOURS USED PER DAY	FRIDAY HOURS USED PER DAY	TOTAL HOURS CLASSROOM IS USED DURING SCHOOL WEEK	TOTAL HOURS CLASSROOM IS AVAILABLE DURING SCHOOL WEEK	UTILIZATION RATE PERCENT (%)	
	Kindergarten	7	735	19	15	15	20	129%	Y	6.5	6.5	6.5	6.5	6.5	32.5	32.5	100%	
	Kindergarten	8	796	18	16	16	20	113%	Y	6.5	6.5	6.5	6.5	6.5	32.5	32.5	100%	
	Kindergarten	10	795	18	16	16	20	113%	Y	6.5	6.5	6.5	6.5	6.5	32.5	32.5	100%	
	1st Grade	13	940	20	22	29	22	91%	Y	6.5	6.5	6.5	6.5	6.5	32.5	32.5	100%	
	1st Grade	14	977	19	22	31	22	86%	Y	6.5	6.5	6.5	6.5	6.5	32.5	32.5	100%	
	1st Grade	15	982	19	22	31	22	86%	Y	6.5	6.5	6.5	6.5	6.5	32.5	32.5	100%	
	2nd Grade	3	795	22	22	25	22	100%	Y	6.5	6.5	6.5	6.5	6.5	32.5	32.5	100%	
	2nd Grade	5	794	22	22	25	22	100%	Y	6.5	6.5	6.5	6.5	6.5	32.5	32.5	100%	
	2nd Grade	6	794	22	22	25	22	100%	Y	6.5	6.5	6.5	6.5	6.5	32.5	32.5	100%	
	3rd Grade	1	795	21	22	25	22	95%	Y	6.5	6.5	6.5	6.5	6.5	32.5	32.5	100%	
	3rd Grade	2	795	20	22	25	22	91%	Y	6.5	6.5	6.5	6.5	6.5	32.5	32.5	100%	
	3rd Grade	4	796	20	22	25	22	91%	Y	6.5	6.5	6.5	6.5	6.5	32.5	32.5	100%	
	4th Grade	11	786	21	24	25	24	88%	Y	6.5	6.5	6.5	6.5	6.5	32.5	32.5	100%	
	4th Grade	12	795	20	24	25	24	83%	Y	6.5	6.5	6.5	6.5	6.5	32.5	32.5	100%	
	4th Grade	P-1	600	20	19	19	19	107%	Y	6.5	6.5	6.5	6.5	6.5	32.5	32.5	100%	
	5th Grade	P-2	697	25	22	22	22	115%	Y	6.5	6.5	6.5	6.5	6.5	32.5	32.5	100%	
	5th Grade	P-3	697	25	22	22	22	115%	Y	6.5	6.5	6.5	6.5	6.5	32.5	32.5	100%	
	Computer Lab		914		0	29	22	0%	Y	0.0	0.0	0.0	0.0	0.0	0.0	32.5	0%	
	Gymnasium		3,213		0	100	44	0%	Y	0.0	0.0	0.0	0.0	0.0	0.0	32.5	0%	
<b>Totals</b>			<b>17,696</b>	<b>351</b>	<b>356</b>	<b>527</b>	<b>435</b>	<b>90%</b>							<b>553</b>	<b>617.5</b>	<b>89%</b>	

**NOTES:**

- Count general classrooms as being used while students are attending recess, lunch, library time, and PE activities.
- 1-Max. Number of Students per Adequacy Standards Sq. Ft.: The maximum number of students allowed per the Statewide Adequacy Standards square feet.
- 2-PED Max. PTR per Classroom: PED's maximum pupil/teacher ratio per classroom
- 3-Utilization Rate Calculation: Total number of hours classroom is actually used per week / (divided by) the maximum possible classroom hours per week = (equals) total classroom utilization.

2014-15 40 day Student Enrollment:	351
------------------------------------	-----

FACILITY CAPACITY (including Portables)	
Maximum Facility Capacity:	435
Functional Facility Capacity:	356
Instructional Space Capacity w/ Portables @ 75%:	314
Instructional Space Capacity w/o Portables @ 75%:	264
Instructional Space Capacity w/ Portables @ 67%:	280
Instructional Space Capacity w/o Portables @ 67%:	236

Number of and % Of General Use Classrooms	14	74%
Number of and % Of Special Education Classrooms	0	0%
Number of and % Of Special Use Classrooms	2	11%
Number of and % Of Portable Classrooms	3	16%
	<b>19</b>	<b>100%</b>

Based On PSFA Square Footage/Student			
351	Students @	132	sqft/student
	Existing Permanent + Portable Facilities =	46,332	sqft
	Percentage of Difference =	31,341	sqft
		68%	

**SECTION**  
**5**

**Space Requirements:**

**Broadmoor Elementary School 2014-15**

District:	Hobbs
School:	Broadmoor ES
Date:	2014-15

GRADE LEVEL	TOTAL CURRENT STUDENT 40th DAY COUNT	NUMBER OF DD / SPECIAL NEEDS STUDENTS PER GRADE	CURRENT NUMBER OF TEACHERS	NUMBER OF CLASSROOMS
Pre-K Student				
Kindergarten	66		4	4
1st Grade	69		4	4
2nd Grade	66		3	3
3rd Grade	66		3	3
4th Grade	67		3	3
5th Grade	66		3	3
<b>TOTALS</b>	<b>400</b>	<b>0</b>	<b>20</b>	<b>20</b>

SCHOOL HOURS	
School Start Time	7:45 AM
School End Time	2:40 AM
<b>Total Hours in School Day</b>	<b>6.5</b>
<b>Number of Lunch Turns Per Day</b>	<b>6</b>

LEGEND	
	General Instruction
	Special Education
	Special Programs
	Non-Instructional

TEACHERS NAME	CLASSROOM USE/ GRADE LEVEL	ROOM NUMBER	CIRM SQUARE FOOTAGE	CURRENT STUDENT 40TH DAY COUNT	Maximum Functional Capacity	Max. Number of Students per Adequacy Standards Sq. Ft.	PED Max. PTR per Classroom	% Classroom Occupancy	DOES CLASSROOM MEET ADEQUACY	DAYS AND HOURS SPACE IS USED					UTILIZATION		
										MONDAY HOURS USED PER DAY	TUESDAY HOURS USED PER DAY	WEDNESDAY HOURS USED PER DAY	THURSDAY HOURS USED PER DAY	FRIDAY HOURS USED PER DAY	TOTAL HOURS CLASSROOM IS USED DURING SCHOOL WEEK	TOTAL HOURS CLASSROOM IS AVAILABLE DURING SCHOOL WEEK	UTILIZATION RATE PERCENT (%)
	Kindergarten w/ Storage		1,040	17	20	20	20	85%	Y	6.5	6.5	6.5	6.5	6.5	32.5	32.5	100%
	Kindergarten w/ Storage		1,040	17	20	20	20	85%	Y	6.5	6.5	6.5	6.5	6.5	32.5	32.5	100%
	Kindergarten w/ Storage		1,040	16	20	20	20	80%	Y	6.5	6.5	6.5	6.5	6.5	32.5	32.5	100%
	Kindergarten w/ Storage		1,040	16	20	20	20	80%	Y	6.5	6.5	6.5	6.5	6.5	32.5	32.5	100%
	1st Grade w/Storage		860	18	22	25	22	82%	Y	6.5	6.5	6.5	6.5	6.5	32.5	32.5	100%
	1st Grade w/Storage		860	17	22	25	22	77%	Y	6.5	6.5	6.5	6.5	6.5	32.5	32.5	100%
	1st Grade w/Storage		860	17	22	25	22	77%	Y	6.5	6.5	6.5	6.5	6.5	32.5	32.5	100%
	1st Grade w/Storage		860	17	22	25	22	77%	Y	6.5	6.5	6.5	6.5	6.5	32.5	32.5	100%
	2nd Grade w/Storage		860	22	22	25	22	100%	Y	6.5	6.5	6.5	6.5	6.5	32.5	32.5	100%
	2nd Grade w/Storage		860	22	22	25	22	100%	Y	6.5	6.5	6.5	6.5	6.5	32.5	32.5	100%
	2nd Grade w/Storage		860	22	22	25	22	100%	Y	6.5	6.5	6.5	6.5	6.5	32.5	32.5	100%
	2nd Grade w/Storage		860	22	22	25	22	100%	Y	6.5	6.5	6.5	6.5	6.5	32.5	32.5	100%
	3rd Grade w/Storage		860	22	22	25	22	100%	Y	6.5	6.5	6.5	6.5	6.5	32.5	32.5	100%
	3rd Grade w/Storage		860	22	22	25	22	100%	Y	6.5	6.5	6.5	6.5	6.5	32.5	32.5	100%
	3rd Grade w/Storage		860	22	22	25	22	100%	Y	6.5	6.5	6.5	6.5	6.5	32.5	32.5	100%
	3rd Grade w/Storage		860	22	22	25	22	100%	Y	6.5	6.5	6.5	6.5	6.5	32.5	32.5	100%
	4th Grade w/Storage		860	23	24	25	24	96%	Y	6.5	6.5	6.5	6.5	6.5	32.5	32.5	100%
	4th Grade w/Storage		860	22	24	25	24	92%	Y	6.5	6.5	6.5	6.5	6.5	32.5	32.5	100%
	4th Grade w/Storage		860	22	24	25	24	92%	Y	6.5	6.5	6.5	6.5	6.5	32.5	32.5	100%
	4th Grade w/Storage		860	22	24	25	24	92%	Y	6.5	6.5	6.5	6.5	6.5	32.5	32.5	100%
	5th Grade w/Storage		860	22	24	25	24	92%	Y	6.5	6.5	6.5	6.5	6.5	32.5	32.5	100%
	5th Grade w/Storage		860	22	24	25	24	92%	Y	6.5	6.5	6.5	6.5	6.5	32.5	32.5	100%
	5th Grade w/Storage		860	22	24	25	24	92%	Y	6.5	6.5	6.5	6.5	6.5	32.5	32.5	100%
	5th Grade w/Storage		860	22	24	25	24	92%	Y	6.5	6.5	6.5	6.5	6.5	32.5	32.5	100%
	Sp.Ed. D Level w/ storage		1,040		8	20	8	0%	Y	0.0	0.0	0.0	0.0	0.0	0.0	32.5	0%
	Sp.Ed. Classroom w/storage (Speech, OT/PT, Pullout, Testing		500		0	15	16	0%	Y	0.0	0.0	0.0	0.0	0.0	0.0	32.5	0%
	Sp.Ed. Classroom w/storage (Speech, OT/PT, Pullout, Testing		500		0	15	16	0%	Y	0.0	0.0	0.0	0.0	0.0	0.0	32.5	0%
	Sp.Ed. Classroom w/storage (Speech, OT/PT, Pullout, Testing		500		0	15	16	0%	Y	0.0	0.0	0.0	0.0	0.0	0.0	32.5	0%
	Sp.Ed. Classroom w/storage (Speech, OT/PT, Pullout, Testing		500		0	15	16	0%	Y	0.0	0.0	0.0	0.0	0.0	0.0	32.5	0%
	Sp.Ed. Classroom w/storage (Speech, OT/PT, Pullout, Testing		500		0	15	16	0%	Y	0.0	0.0	0.0	0.0	0.0	0.0	32.5	0%
	Art		860		0	27	22	0%	Y	0.0	0.0	0.0	0.0	0.0	0.0	32.5	0%
	Music		860		0	27	22	0%	Y	0.0	0.0	0.0	0.0	0.0	0.0	32.5	0%
	Bilingual Education		860		0	27	22	0%	Y	0.0	0.0	0.0	0.0	0.0	0.0	32.5	0%
	Computer Lab: connect one to Library		860		0	27	22	0%	Y	0.0	0.0	0.0	0.0	0.0	0.0	32.5	0%
	Computer Lab: connect one to Library		860		0	27	22	0%	Y	0.0	0.0	0.0	0.0	0.0	0.0	32.5	0%
	Gymnasium		2,400		0	75	44	0%	Y	0.0	0.0	0.0	0.0	0.0	0.0	32.5	0%
<b>Totals</b>			<b>27,660</b>	<b>400</b>	<b>452</b>	<b>773</b>	<b>670</b>	<b>58%</b>		<b>Totals</b>	<b>650</b>	<b>1007.5</b>	<b>65%</b>				

**NOTES:**  
 Count general classrooms as being used while students are attending recess, lunch, library time, and PE activities.  
 1-Max. Number of Students per Adequacy Standards Sq. Ft.: The maximum number of students allowed per the Statewide Adequacy Standards square feet.  
 2-PED Max. PTR per Classroom: PED's maximum pupil/teacher ratio per classroom  
 3-Utilization Rate Calculation: Total number of hours classroom is actually used per week / (divided by) the maximum possible classroom hours per week = (equals) total classroom utilization.

2014-15 40 day Student Enrollment:	400
<b>FACILITY CAPACITY (including Portables)</b>	
Maximum Facility Capacity:	670
Functional Facility Capacity:	452
Instructional Space Capacity w/ Portables @ 75%:	479
Instructional Space Capacity w/o Portables @ 75%:	479
Instructional Space Capacity w/ Portables @ 67%:	427

Number of and % Of General Use Classrooms	20	69%
Number of and % Of Special Education Classrooms	3	10%
Number of and % Of Special Use Classrooms	6	21%
Number of and % Of Portable Classrooms	0	0%
	<b>29</b>	<b>100%</b>

<b>Based On PSFA Square Footage/Student</b>			
400	Students @	132	sqft/student
52,800			sqft

## Space Requirements:

### SCHOOL SITE AND BUILDING FUNCTIONS AND RELATIONSHIPS:

Refer to Section 6 for a detailed list of site characteristics.

#### Basic Site Relationships:

Each school site should provide:

##### Safe Access:

- Clearly marked, visible visitor vehicular entrance

- Separate vehicular and pedestrian traffic

- Separate bus pick-up and drop-off area from other vehicular and pedestrian areas

- Separate, clearly marked and visible Parent pick-up and drop-off area

- Emergency vehicle access to site and building

##### Parking:

- Separate staff and visitor parking

- Clearly marked, visible visitor parking adjacent to building entry

- Staff Parking adjacent to classrooms when possible

- Delivery area adjacent to kitchen and multi-space

##### Security:

- Visual access from building to main site entrance

- Visual access from building to main building entrance

- Fenced Kindergarten play area adjacent and direct access to kindergarten classrooms when possible

- Fenced age appropriate playground adjacent to classroom when possible

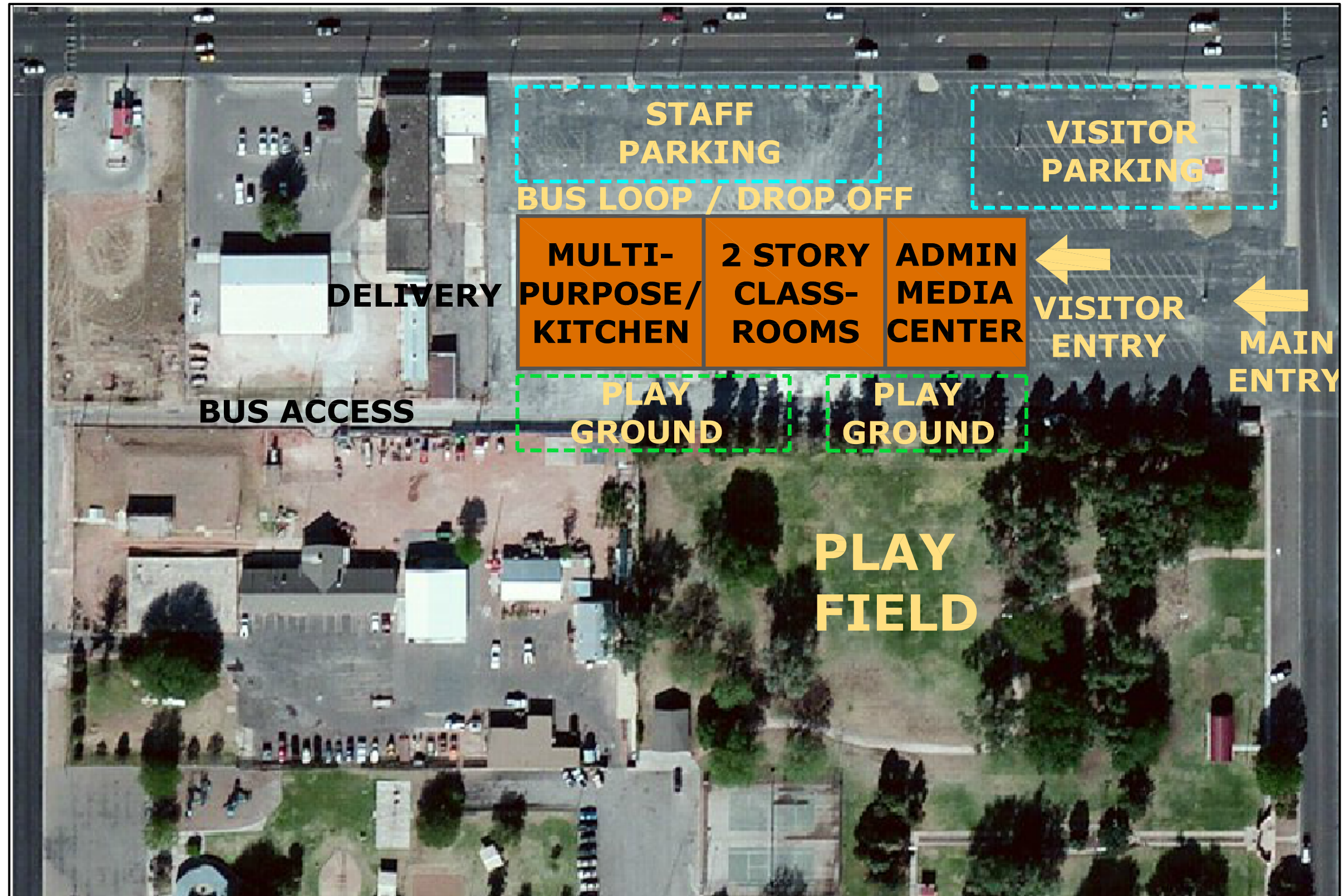
- Play field adjacent and accessible to playgrounds when possible

Refer to pages 20 and 21 for site relationship diagrams for the New Hobbs Elementary School and the Broadmoor Replacement Elementary School.

*This page intentionally left blank.*

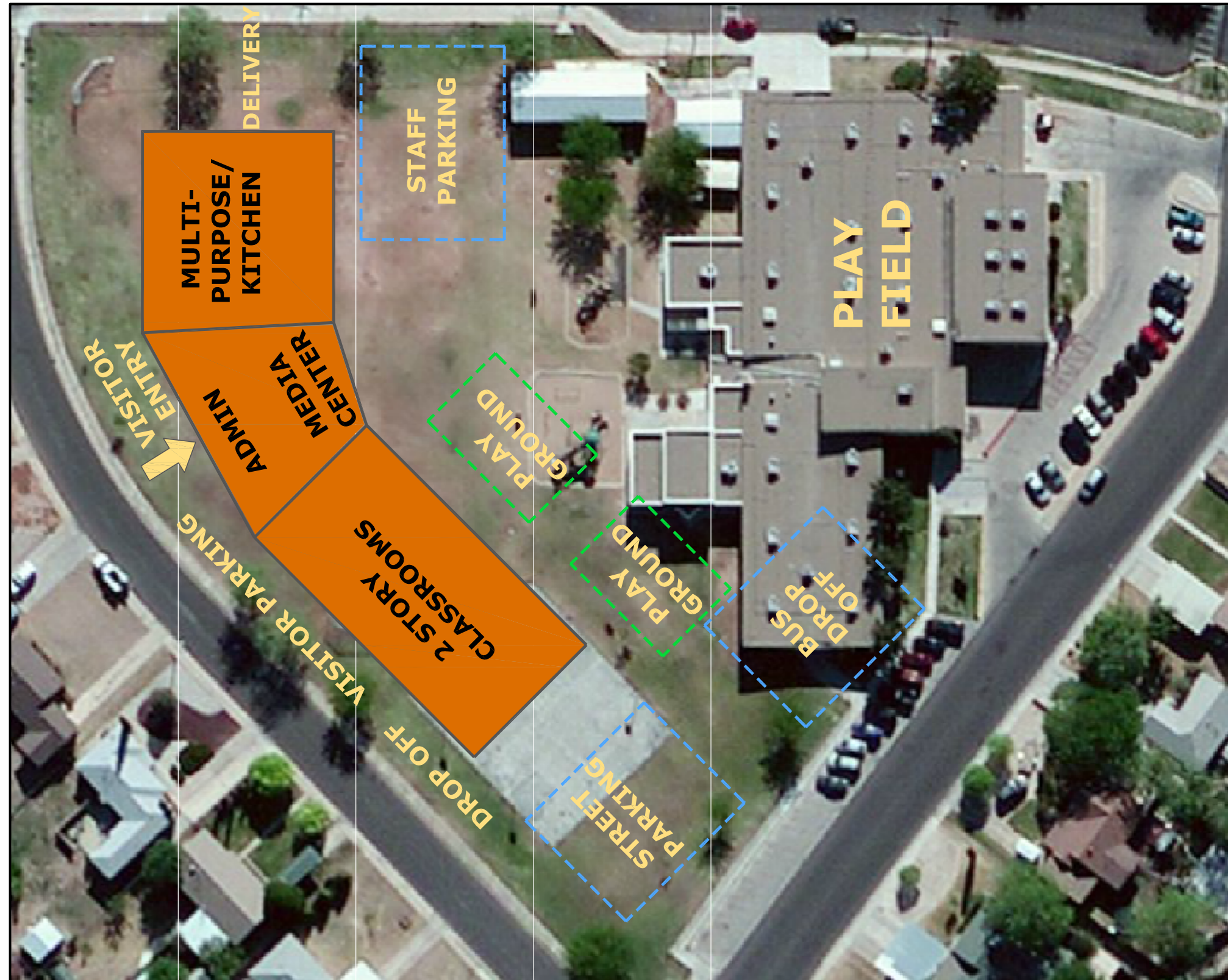


New Hobbs Elementary School Site Relationship Diagram



# Space Requirements:

Broadmoor Replacement Elementary School Site Relationship Diagram



## Space Requirements:

### Basic Building Relationships:

The following adjacencies are recommendations and should be incorporated into the design whenever possible. Verify alternate adjacencies with staff if these adjacencies cannot be incorporated into the overall design.

#### General Use Classrooms:

- Group Kindergarten, 1st and 2nd grades in one area
- Locate Kindergarten, 1st and 2nd grades on lower level of two story school
- Locate Playground for Kindergarten in close proximity to Kindergarten classroom
- Group 3rd, 4th and 5th grade in one area
- Locate 3rd, 4th and 5th grade on upper level of two story school
- Locate Playground for 1st – 5th grades in close proximity to classrooms when possible
- Locate restrooms in close proximity to general use classrooms
- Visitor access to general use classrooms controlled by Administration

#### Special Education Classrooms:

- Locate special education classrooms in proximity to the general use classrooms for inclusion
- Locate some special education classrooms on lower level of two story school
- Locate some special education classrooms on upper level of two story school
- Visitor access to special education classrooms controlled by Administration

#### Special Use Classrooms:

- Locate special use classrooms (bilingual, art, music, computer) in close proximity to general use classrooms when possible
- Physical education space to be joined to cafeteria
- Physical education space to be joined to music room
- Music room to serve as stage for Physical education / cafeteria space
- Locate one computer lab on lower level of two story school
- Provide staff restroom in close proximity to teacher lounge / workrooms
- Locate one computer lab on upper level of two story school
- Visitor access to ALL special use classrooms controlled by Administration

## Space Requirements:

### Library / Media Center:

- Locate Library / Media Center in close proximity to Administration
- Locate Project Based space in direct access to Library / Media Center
- Locate Library / Media Center on lower level of two story school
- Access to Library / Media Center controlled by Administration

### Food Service:

- Cafeteria to be joined to physical education space
- Kitchen to be joined to cafeteria
- Provide direct access to storage from cafeteria
- Provide visual access of cafeteria from kitchen office
- Provide direct access to kitchen from delivery area
- Access to cafeteria and kitchen controlled by Administration

### Parent Workroom:

- Access to Parent workroom monitored by Administration

### Administration:

- Visual access of main site entrance from administration area
- Visual access of main building entrance from administration area
- Visual and physical access of ISS room from reception and Principal's office
- Administration to control access to remainder of school
- Counseling to be adjacent to Administration
- Health to be adjacent to Administration

### Health:

- Health to be adjacent to Administration
- Access to Health to be controlled by Administration

### Teacher Workroom / Lounge:

- Teacher Lounge to be located on lower level of two story school
- Locate teacher lounge in close proximity to teacher workroom on lower level
- Locate one teacher workroom on lower level of two story school
- Locate one teacher workroom on upper level of two story school
- Access to Teacher workroom / lounge controlled by Administration

## Space Requirements:

### General Storage:

- Locate some general storage on lower level of two story school
- Locate some general storage on upper level of two story school
- Locate general storage adjacent to general use classrooms
- Visitor access to general storage controlled by Administration

### Miscellaneous Support:

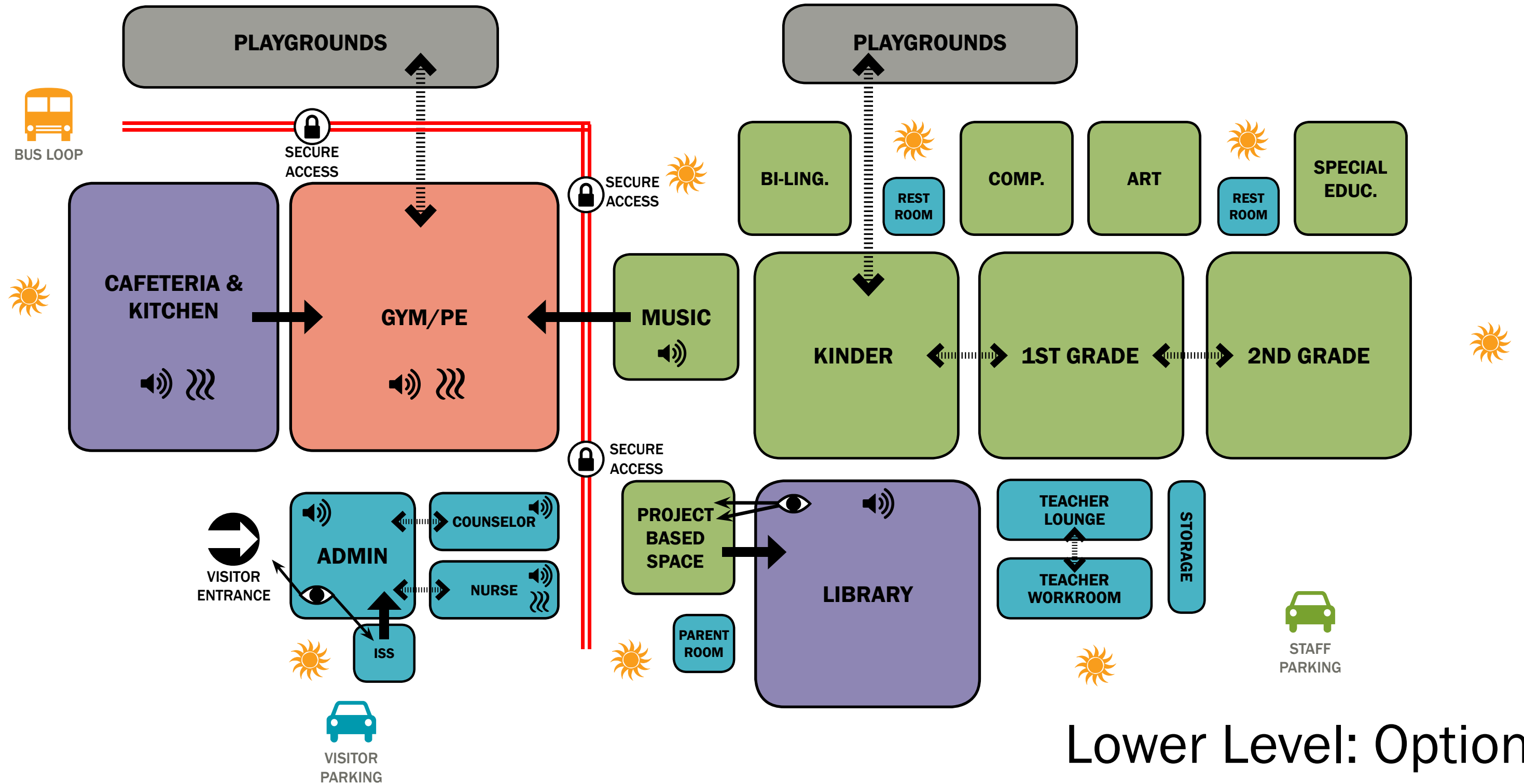
- Locate IT equipment room in proximity to center of school
- Access to IT equipment room controlled by Administration

Refer to pages 25-27 for spatial relationship diagrams for the New Hobbs Elementary School and the Broadmoor Replacement Elementary School. Two options, A and B, have been provided for the lower level of a two story school. Both options meet the spatial relationships identified by HMS.

*This page intentionally left blank.*

SECTION  
**5**

Space Requirements:

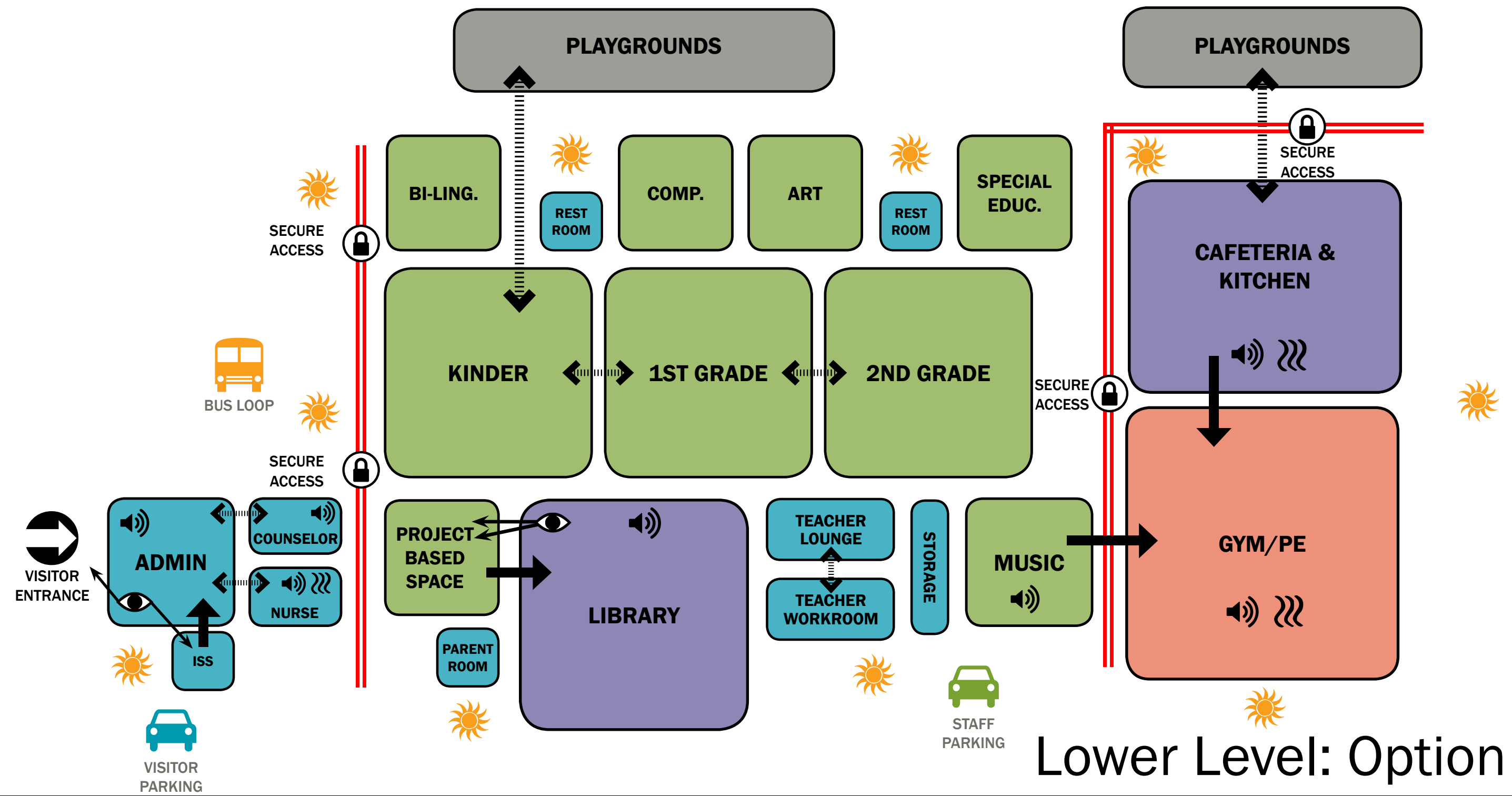


Lower Level: Option A

**LEGEND**

- DIRECT ACCESS
- ADJACENCY
- ENTRANCE
- VISUAL ACCESS
- SPECIAL ACOUSTICS
- SPECIAL VENTILATION
- NATURAL LIGHT
- SECURE ACCESS

Space Requirements:

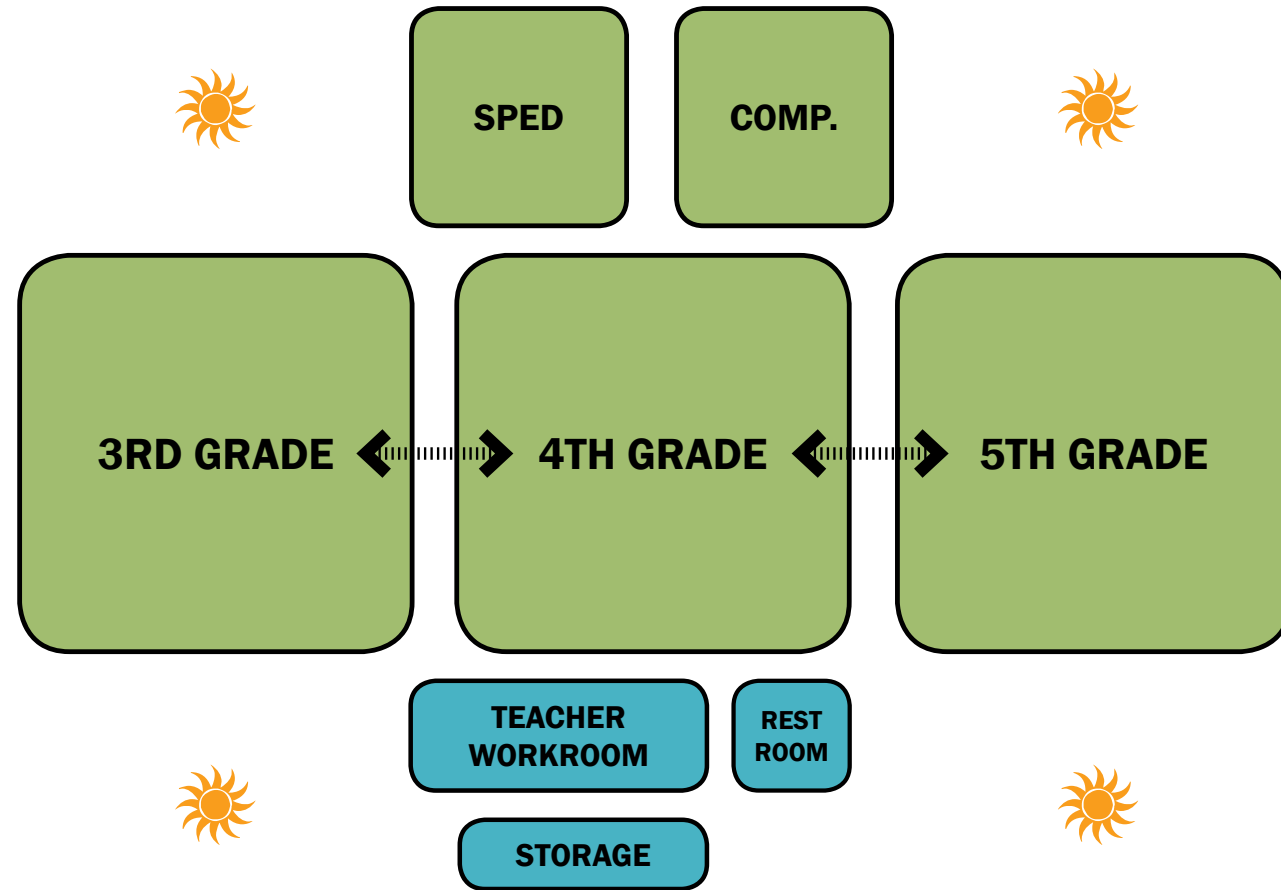


Lower Level: Option B

**LEGEND**

- DIRECT ACCESS
- ADJACENCY
- ENTRANCE
- VISUAL ACCESS
- SPECIAL ACOUSTICS
- SPECIAL VENTILATION
- NATURAL LIGHT
- SECURE ACCESS





## Upper Level: Option A&B

**LEGEND**



*This page intentionally left blank.*